



7 ROMANBY COURT, 31 MILL STREET, REDHILL, SURREY, RH1 6PA
£330,000
LEASEHOLD

***** SPACIOUS TOP FLOOR APARTMENT WITH STUNNING VIEWS AND COVERED PARKING *****

This superb property is offered for sale with the benefit of no ongoing chain and is a rarely available opportunity.

The property is accessed via external, communal steps, and its only direct neighbour is directly below. There is a generous hallway, with ample built in storage, a large, L-shaped living/dining space, which is dual aspect and has doors out to a private balcony that offers impressive southerly views. There is a separate fitted kitchen, with a window to the side and a new, wall mounted boiler. You have two bedrooms, both benefitting from fitted wardrobes, and one having an en-suite shower room. In addition, there is a family bathroom, separate utility room, and a large, covered terrace to the rear.

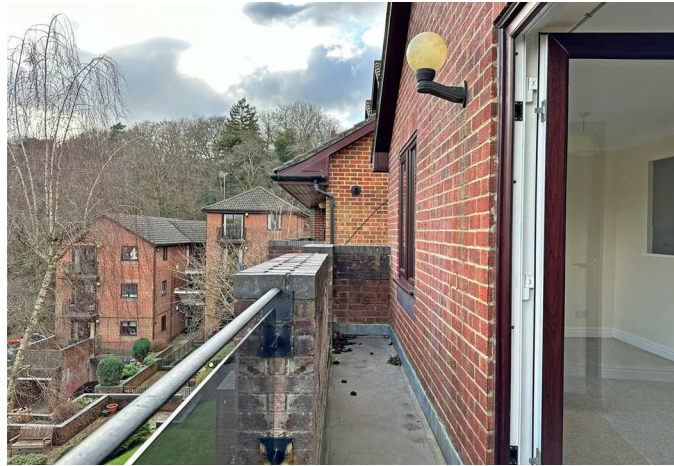
The property is fully double glazed, as well as having gas central heating. There is a covered, allocated parking space, and access to a external store room that you have a third share of. There is also communal visitor parking,

Romanby Court is situated directly opposite Redhill Common, there you have extensive walks and some outstanding views across Surrey and West Sussex.

There are a number of local stores within easy reach for those everyday essentials, as well as being a short walk from the highly popular Deli on the Hill. Redhill town centre itself is around half a mile from the property, meaning you have easy access to the wide range of shops and amenities on offer, including a new, multi screen cinema complex, direct train services to central London and Gatwick.

- **TOP FLOOR APARTMENT**
- **KITCHEN**
- **BATHROOM AND ENSUITE**
- **ALLOCATED COVERED PARKING**
- **COUNCIL TAX BAND: D**
- **LOUNGE/DINING ROOM**
- **TWO BEDROOMS**
- **BALCONY AND TERRACE**
- **GREAT VIEWS**
- **EPC RATING: D**





ROOM DIMENSIONS:

ENTRANCE HALL

14'8 x 10'10 (4.47m x 3.30m)

LOUNGE/DINING ROOM

21'2 x 18'2 (6.45m x 5.54m)

BALCONY

KITCHEN

9'11 x 9'4 (3.02m x 2.84m)

UTILITY ROOM

6'2 x 4'5 (1.88m x 1.35m)

BEDROOM ONE

11'3 x 9'4 (3.43m x 2.84m)

COVERED TERRACE

9'1 x 8'1 (2.77m x 2.46m)

ENSUITE BATHROOM

6'2 x 6'2 (1.88m x 1.88m)

BEDROOM TWO

9'3 x 7'11 (min) (2.82m x 2.41m (min))

BATHROOM

6'2 x 6'2 (1.88m x 1.88m)

GAS CENTRAL HEATING

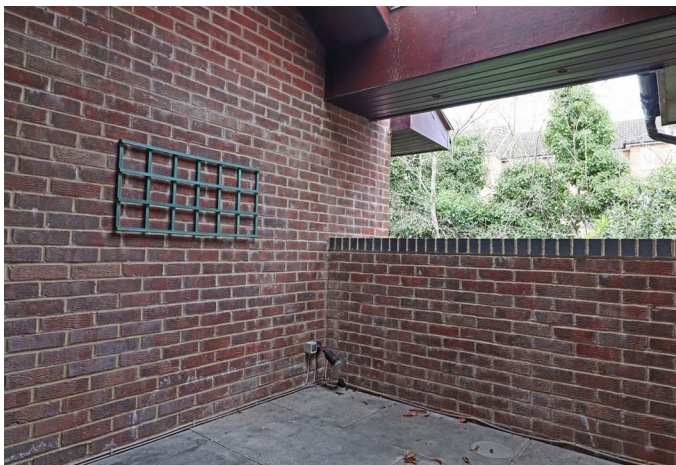
DOUBLE GLAZED WINDOWS

ALLOCATED COVERED PARKING SPACE

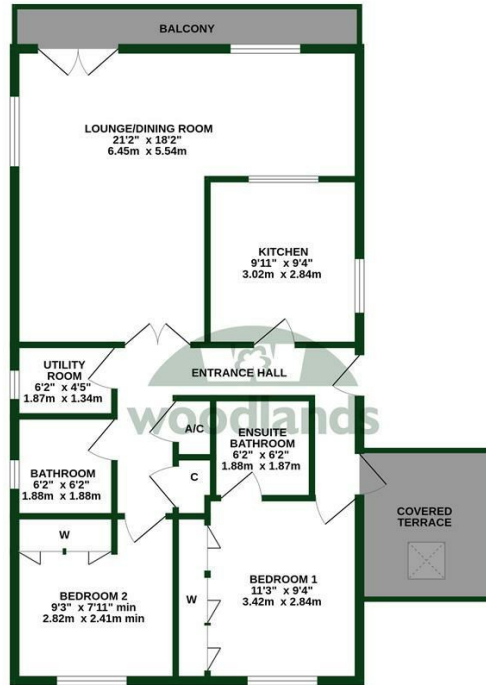
YEARS REMAINING ON LEASE: 89 YEARS

GROUND RENT: £160 PER ANNUM

SERVICE CHARGES: £2,509.77 PER ANNUM



TOP FLOOR
821 sq.ft. (76.3 sq.m.) approx.



TOTAL FLOOR AREA : 821 sq.ft. (76.3 sq.m.) approx.
While every attempt has been made to ensure the accuracy of the floorplan contained here, measurements of doors, windows, rooms and any other items are approximate and no responsibility is taken for any error, omission or mis-statement. This plan is for illustrative purposes only and should be used as such by any prospective purchaser. The services, systems and appliances shown have not been tested and no guarantee as to their operability or efficiency can be given.
Made with Measure 02/05



woodlands

OnTheMarket.com

rightmove

Zoopla

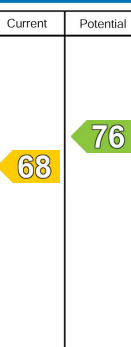
The Property Ombudsman

tsi APPROVED CODE TRADINGSTANDARDS.GOV.UK

naea propertymark PROTECTED

Energy Efficiency Rating

	Current	Potential
<i>Very energy efficient - lower running costs</i>		
(92 plus) A		
(81-91) B		
(69-80) C		
(55-68) D		
(39-54) E		
(21-38) F		
(1-20) G		
<i>Not energy efficient - higher running costs</i>		
England & Wales	EU Directive 2002/91/EC	



To view this property please call 01737 771777

www.woodlands-estates.co.uk

These particulars are set out as a general outline for the guidance of intending purchasers or lessees and do not constitute any part of an offer or contract. No person in the employment of the above named agents has any authority to make or give any representation or warranty whatsoever in relation to this property. If there is any point which is of particular interest, please contact our office and we will be pleased to check the information. The mention of any appliances and/or services does not imply they are in full and efficient working order.